

Bible Sampler Garden of Eden (Block 3)

Quilt Block 3 (finished size 12 inches)

ABILITY

Suitable for all levels.

DESCRIPTION

This is Block 3 in the Bible Sampler of the Month Series.

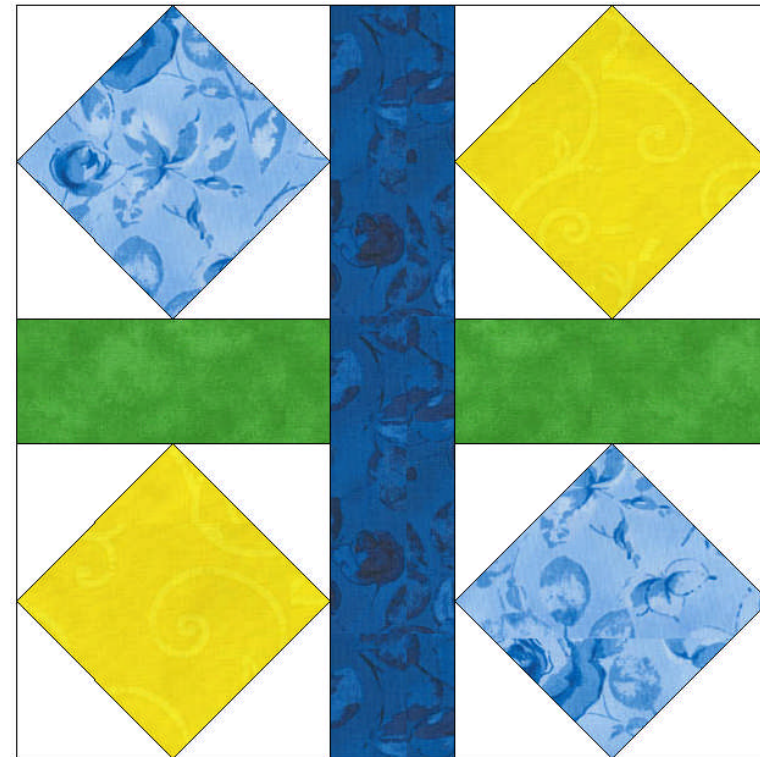
ACRYLIC TEMPLATES USED

Optional acrylic templates are available for this Block of the Month from M&L Designs. www.mandldesigns.com or Baycreek Quilting Products www.quilttemplates.com

Fabric Requirements: We used Maywood Roses in dark blue and light blue, and scraps of yellow, green and white print. (Fabric yardage is given for the whole quilt.)

	Light Blue	Color 1	2-1/4 yards
	Yellow	Color 2	1 yard
	Green	Color 3	1 yard
	Dark Blue	Color 4	1 yard
	White Print	Color 5	1-1/2 yard

Bible Sampler Garden of Eden (Block 3)



Finished block size 12 inches.



P.O. Box 395, Coos Bay, OR 97420

www.MandLdesigns.com

We have made every effort to ensure that these instructions are accurate and complete. We cannot, however, be responsible for human error, typographical mistakes, or variations in individual work.

© 2011, Linda Laney, all rights reserved. No part of this pattern may be reproduced in any form or by any means without written permission from the designer.

© 2011, Linda Laney, all rights reserved.

GENERAL DIRECTIONS:

1. All seams are 1/4 throughout.
2. Press seams toward darker fabric after each step.
3. Use either the full size templates to cut out the patches, or the rotary cutting instructions.
4. Use the template diagrams for piecing each of the blocks together.
5. Follow finished block diagrams for color placement of patches.

TEMPLATES:

Trace your templates on to poster board or template plastic before cutting, or use the optional acrylic templates that are available on our website. Be sure to mark the Block letter and the Template letter on each Template.

Template Cutting Directions:

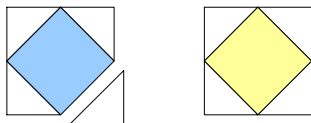
Finished size is 12 inches. You need 1 block. Cut the following number of patches:

A	Color 5	16
B	Color 4	1
C	Color 3	2
D	Color 1	2
D	Color 2	2

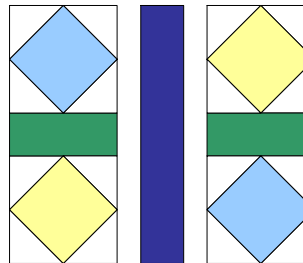
Rotary Cutting Directions:

- A – Cut 8 squares 3-3/8 x 3-3/8 inches from color 5. Cut in half diagonally making 16 triangles.
- B – Cut 1 strip 2-1/2 x 12-1/2 inches from color 1.
- C – Cut 2 strips 2-1/2 x 5-1/2 inches from color 3.
- D – Cut 2 squares 4 x 4 inches from color 1 and color 2.

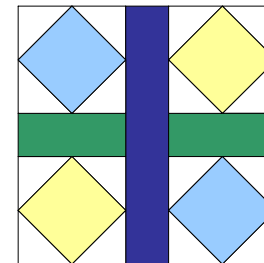
Sewing Directions:



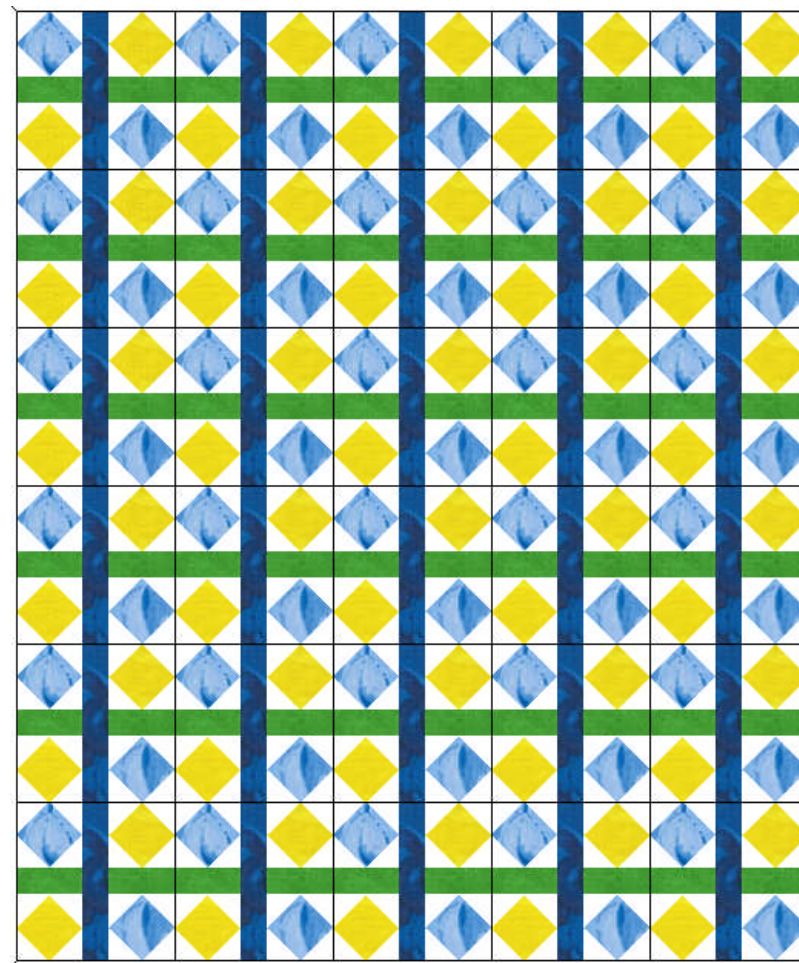
Step 1: Sew A triangles to D squares. Make 2 units of each color.



Step 2: Sew units to green strips. Make 2 strips.



Step 3: Sew strips to blue strip to complete block.



Sample Quilt Layout using Garden of Eden block.